

# CERTIFICATE OF LOCATION OF GOVERNMENT CORNER

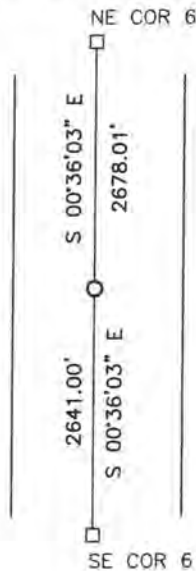
EAST QUARTER Corner of Section 6, Township 108, Range 41, 5TH P.M.

STATE OF MINNESOTA, County of MURRAY

At the corner location shown on the sketch:

- On \_\_\_\_\_ found a \_\_\_\_\_  
DATE
- left monument as found,  lowered monument,  removed monument (explain)
- On 5/7/14 placed a 5/8" iron w/seal #43844  
DATE

### SKETCH OF REFERENCE TIES

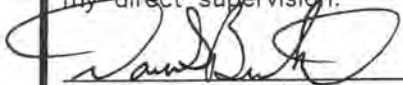


Minnesota State Plane Coordinate  
 System Murray County Datum  
 NAD83 (1996)  
 N: 224260.558  
 E: 490072.053

NO TIES

Statement of evidence relative to this corner location is on back of page.

I hereby certify that this document and the data contained herein was prepared by me or under my direct supervision.

  
SIGNATURE      1/14/15  
DATE

Registration No. 43844

- Land Surveyor,     Professional Engineer  
 County Surveyor,    County Engineer

OFFICE OF THE COUNTY RECORDER

County of \_\_\_\_\_

I hereby certify that this document was filed in the Co. Recorders office at \_\_\_\_\_ .M on the \_\_\_\_\_ day of FEB 20 2015 A.D. 20\_\_

County Recorder Guelyn C. Larson

By \_\_\_\_\_, Deputy

DOCUMENT NO. \_\_\_\_\_

## Statement of Evidence

In 1861, L.G.M. Fletcher did the original subdivision of the township.

On July 3, 1931, (No name) showed a stone recorded at the corner.

On May 7, 2014, Bueltel-Moseng Land Surveying dug with a backhoe. Found nothing. Set  $\frac{5}{8}$ " iron with seal #43844 at proportionate distances between section corners.